

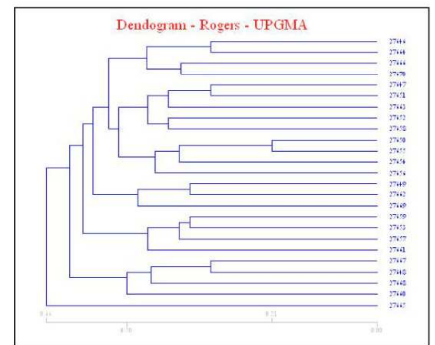
LABKEY

Research Ressource Planning

MOLECULAR MARKERS MODULE UNIFIED MANAGEMENT OF MARKERS

1 Storage of the results of molecular marking

- Multi-Methods/Multi-Laboratories.
- Stock control of markers at different levels representing the marking techniques used and the alleles.
- Control of molecular markers in relation with genotypes and methods of analysis.
- Traceability is assured by following the movements in the marker stock.
- Observations from analysis apparatus and sequencers are directly integrated into laboratory experiments.



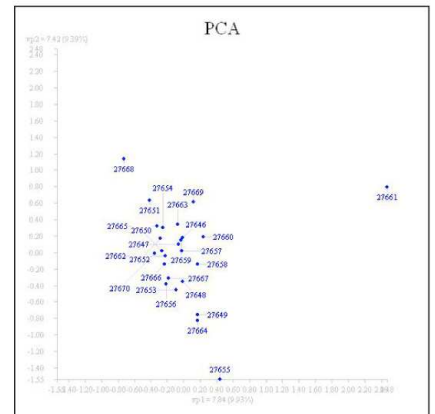
Dendrogram of the different varieties analyzed

	27646	27647	27648	27649	27650	27651	27652
27646	1	0.833	1	1.08	1.33	0.833	1.17
27647	0.833	1	0.833	1.08	0.833	0.833	0.833
27648	1	0.833	1	1.08	1.33	0.833	1
27649	1.08	1.08	1.08	1	1.42	1.08	1.08
27650	1.33	0.833	1.33	1.42	1	1.17	1.33
27651	0.833	0.833	0.833	1.08	1.17	1	1
27652	1.17	0.833	1	1.08	1.33	1	1
27653	1.17	1	1.5	1.25	1.17	1.17	1.33
27654	1.25	1.08	1.25	0.833	0.917	1.25	1.08
27655	1.25	0.75	1.25	1.17	0.817	1.08	1.25

Matrix of genetic distances between varieties

2 Comparison of genotypes and Marker-Phenotype relations

- Calculation algorithms of genetic distances.
- Matrix of genetic distances.
- Calculations of genetic distances, dendograms, PCA (Principal Components Analysis).
- Perfect integration of this module in Labkey enabling the comparison of results obtained with other results such as observations made in experiments carried out in the field or in breeding nurseries.
- Marker-Phenotype correlation graphs.
- Interfaces with standard analysis tools.

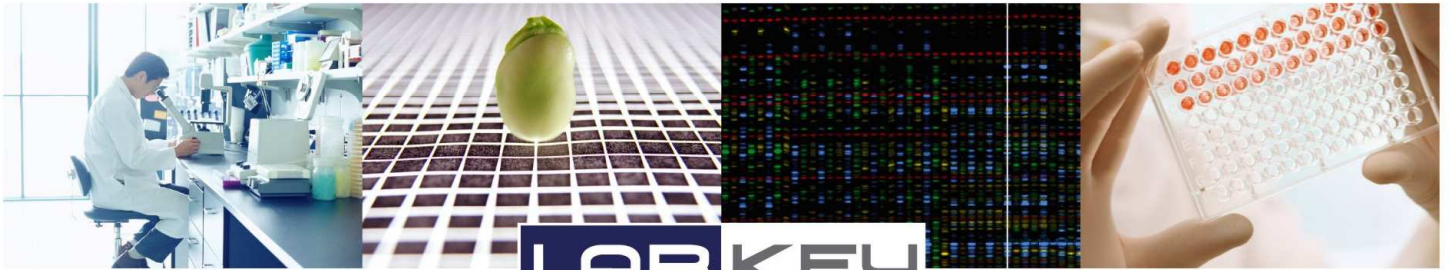


2D projection graph on the first two principal components obtained from the Principal Components Analysis (PCA)

3 A European innovation

The Research and Development of Labkey Molecular Markers has been awarded the **Eureka** label.

Eureka has generated European collaboration between a research center, which is a leader in scientific innovation, an expert in informatics solutions and clients from industry who can confirm market needs.



LABKEY

Research Ressource Planning

LABKEY LABORATORY SUITE

⇒ An integrated chain for the equipping of a marker production laboratory and for researchers exploiting the results



www.doriane.com